

Pattini di saldatura per tipo ExOn 1/1A

Piatto

Ordine N°

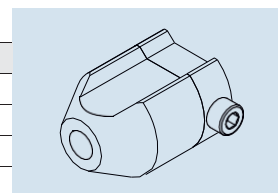
D-0842	30x40 x 30 mm
--------	---------------



Tondo

Ordine N°

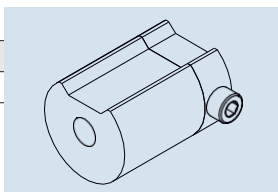
D-0839	∅ 15 mm
D-0840	∅ 20 mm
D-0841	∅ 25 mm



Tondo

Ordine N°

D-0843	∅ 30 mm
--------	---------

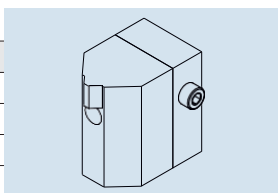


Pattini di saldatura per tipo ExOn 2 – 6

Saldatura ad angolo

Ordine N° spess. lastra (s)

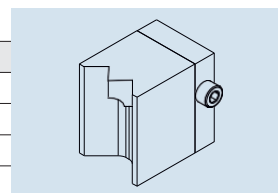
D-0174	5–8
D-0175	10–12
D-0177	15
D-0178	20
D-0179	25
D-0180	30
D-0181	35
D-0182	40



Sald. angolo esterno

Ordine N°

D-0195	5–8
D-0196	10
D-0197	15



Sald. Sovrapp

Ordine N°

D-0192	25
D-0193	30
D-0194	35
D-0599	40

